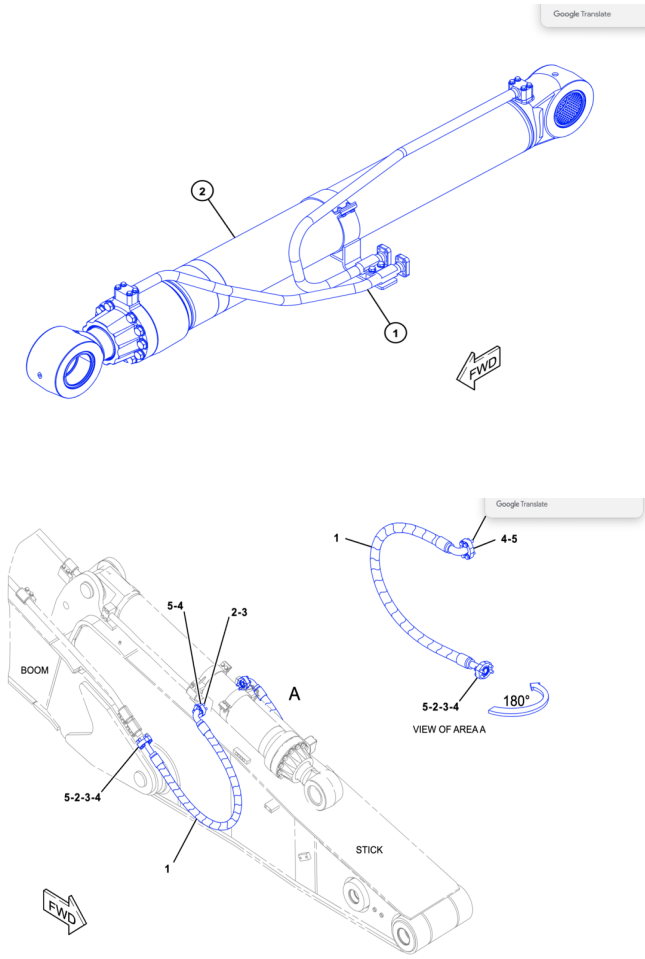


Product Overview

|                        |  |
|------------------------|--|
| Product Name           | arm cylinder   |
| Part Number            | 564-4924   |
| Quantity per Equipment | 1  |
| Weight                 | 879.1KG  |
| Origin                 | United States  |
| Brand Name             | STONE  |
| Model                  | 395F   |
| Price                  | Negotiable   |
| Packing Details        | Standard Export Packing  |
| Delivery Time          | 0-30 Days  |
| Payment Term           | L/C, T/T   |
| Price Term             | FOB, CIF, CFR  |
| Supply Capacity        | 50,000 PCS/Month   |
| Minimum Order Quantity | 1 PC   |
| Material               | High Quality Steel   |
| Technology             | Precision Machining  |
| Surface                | Treatment Anti-Corrosion Coating                                     |
| Hardness               | HRC 48-52  |
| Quality                | Original Factory Standard  |
| Warranty Time          | 12 Months or 2000 Hours  |
| After-Sales Service    | Full Support, Online Service   |
| Color                  | Standard Caterpillar Yellow or Customizable                          |
| Application            | Excavator  |
| Customizable           | including customized materials, surface treatment and specifications |



Major Component Weights



| Type  | Weight (kg) | Weight (lbs) |
|---|-------------|--------------|
| Booms (including lines, pins, stick cylinder)                   |             |              |
| Mass Boom 7.25 m(23'9")   | 8560        | 18,880       |
| GP Boom 8.4 m(27'7")  | 9310        | 20,530       |
| Reach Boom 10.0 m(32'10")                                       | 10,810      | 23,830       |
| Sticks (including lines, pins, bucket cylinder, bucket linkage) |             |              |
| Mass Stick M2.92JC(9'7")  | 5510        | 12,150       |
| GP Stick GP2.92 JC(9'7")  | 4990        | 10,990       |
| Mass Stick M3.4 JC(11'2")                                       | 5550        | 12,240       |
| GP Stick GP3.4 JC(11'2")  | 5290        | 11,660       |
| Reach Stick R4.4 HB2(14'5")                                     | 5030        | 11,100       |
| Reach Stick R5.5 HB2 (18'1")                                    | 5510        | 12,140       |
| Buckets (without linkage)                                       |             |              |
| 4.2 m³(5.5 yd³)SD   | 4580        | 10,100       |
| 5.2 m³(6.8 yd³)SD   | 5190        | 11,440       |
| 6.5 m³(8.5 yd³)SDV  | 7790        | 17,170       |

# excavator arm cylinder

564-4924

The screenshot shows the CAT SIS 2.0 interface for a WGA excavator. The main view displays a 3D technical drawing of a boom cylinder assembly with callouts 1 and 2. The left sidebar lists various hydraulic components, with '564-4918 Cylinder & Lines GP-Boom WGA1-UP' selected. The right sidebar shows the '整个组' (Assembly) details for '564-4918 CYLINDER & LINES GP-BOOM -BOOM, RH' and a table of parts:

| 零件号        | 零件名称                    | 数量 | 必需 |
|------------|-------------------------|----|----|
| 1 564-4920 | 动臂油缸管路总成 (RH)           | 1  | Y  |
| 2 564-4924 | Cylinder & Seal GP-Boom | 1  | Y  |

## STONE: Construction machinery parts expert in China



We are committed to providing a variety of parts including bulldozers, excavators and wheel loaders for well-known brands such as Carter and Komatsu. Our product line covers a full range of OEM parts, such as Track Chain, Track Rollers, Sprocket, Excavator Buckets, Blades, Excavator Cylinders, Swing Circles, and various electrical and hydraulic components to ensure that our customers' stringent requirements for quality and performance are met.



Stone (Shanghai) Engineering Machinery Co., Ltd. is a leading supplier of engineering machinery parts, focusing on providing high-quality parts for mining companies. Since its establishment in 2004, we have been based in Shanghai, China, and have built our own brand STONE, becoming a trusted choice in the industry.